

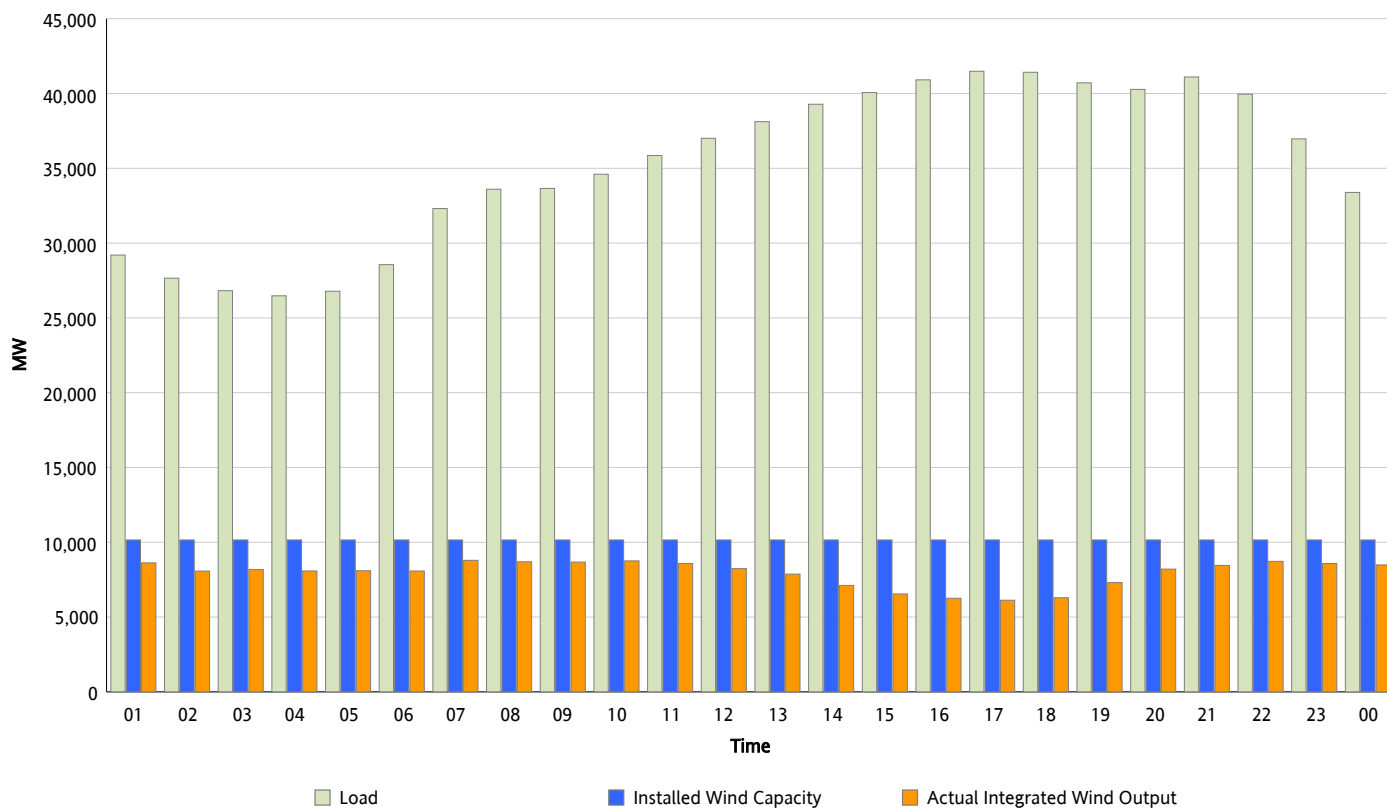


ERCOT Grid Operations

Wind Integration Report : 04/09/2013

Peak Load	41,489 MW
Load Peak Hour (HE)	17
Wind Over Peak	6,127 MW
Wind Record 02/09/13	9,481 MW
Max Wind Value*	9,115 MW
Wind Peak Time	06:33
Wind Integration %	27.85 %

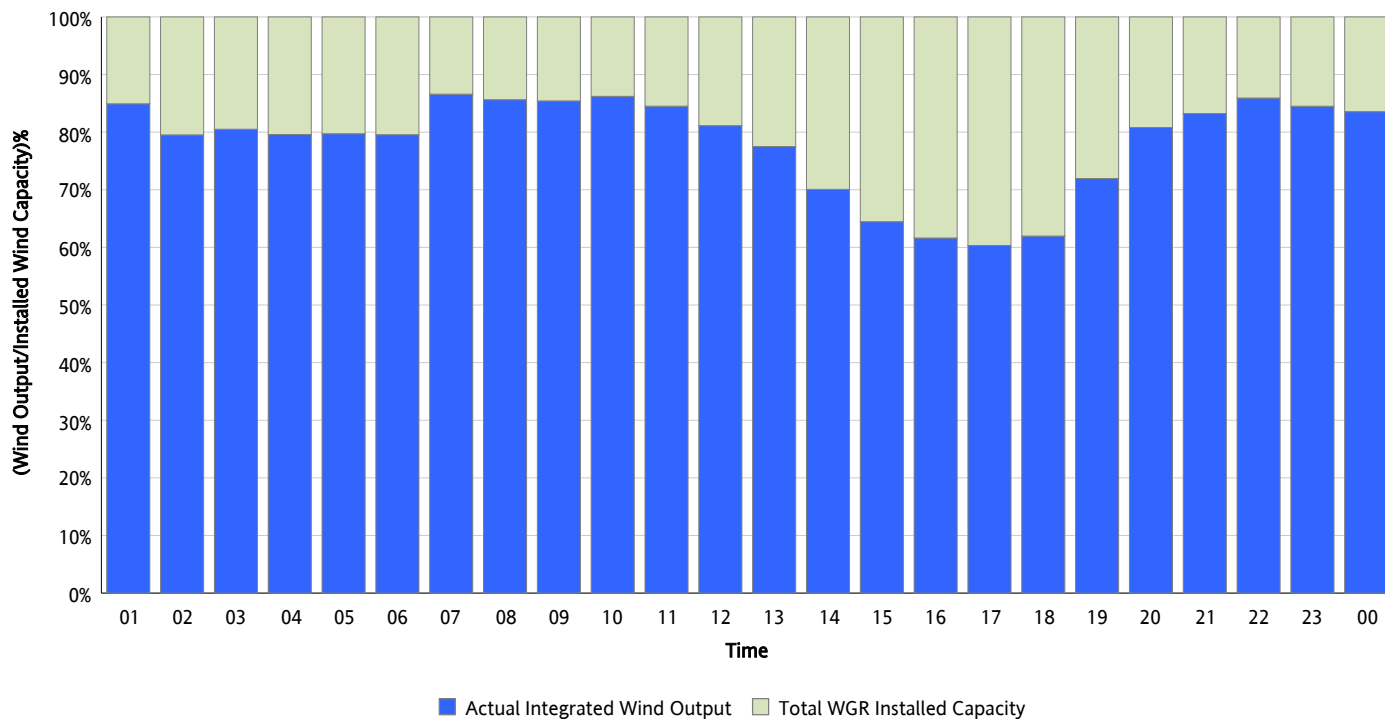
Hourly Average Actual Load vs. Actual Wind Output
04/09/2013



* Wind Record and Wind Max represent instantaneous values and the rest of the values are integrated over the hour

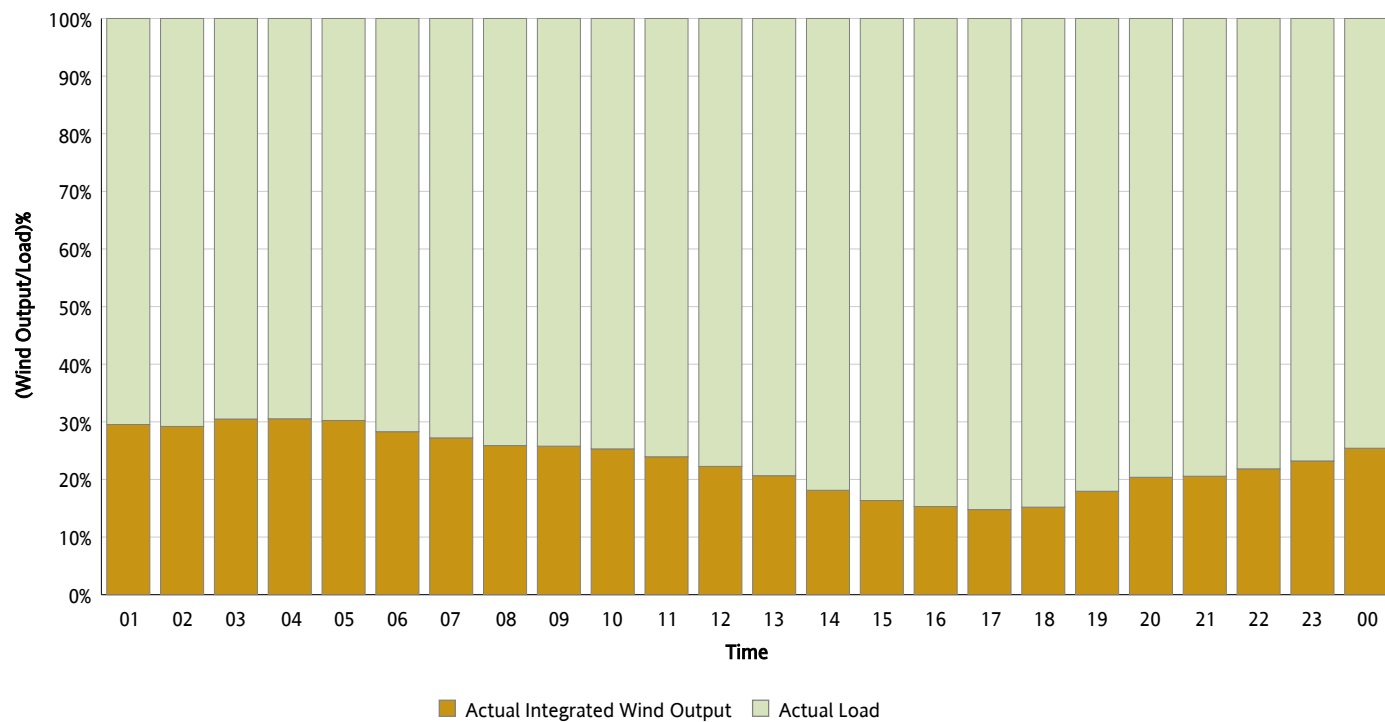
Actual Wind Output as a Percentage of the Total Installed Wind Capacity

04/09/2013



Actual Wind Output as a Percentage of the ERCOT Load

04/09/2013



ERCOT Load vs. Actual Wind Output

04/02/2013 - 04/09/2013

